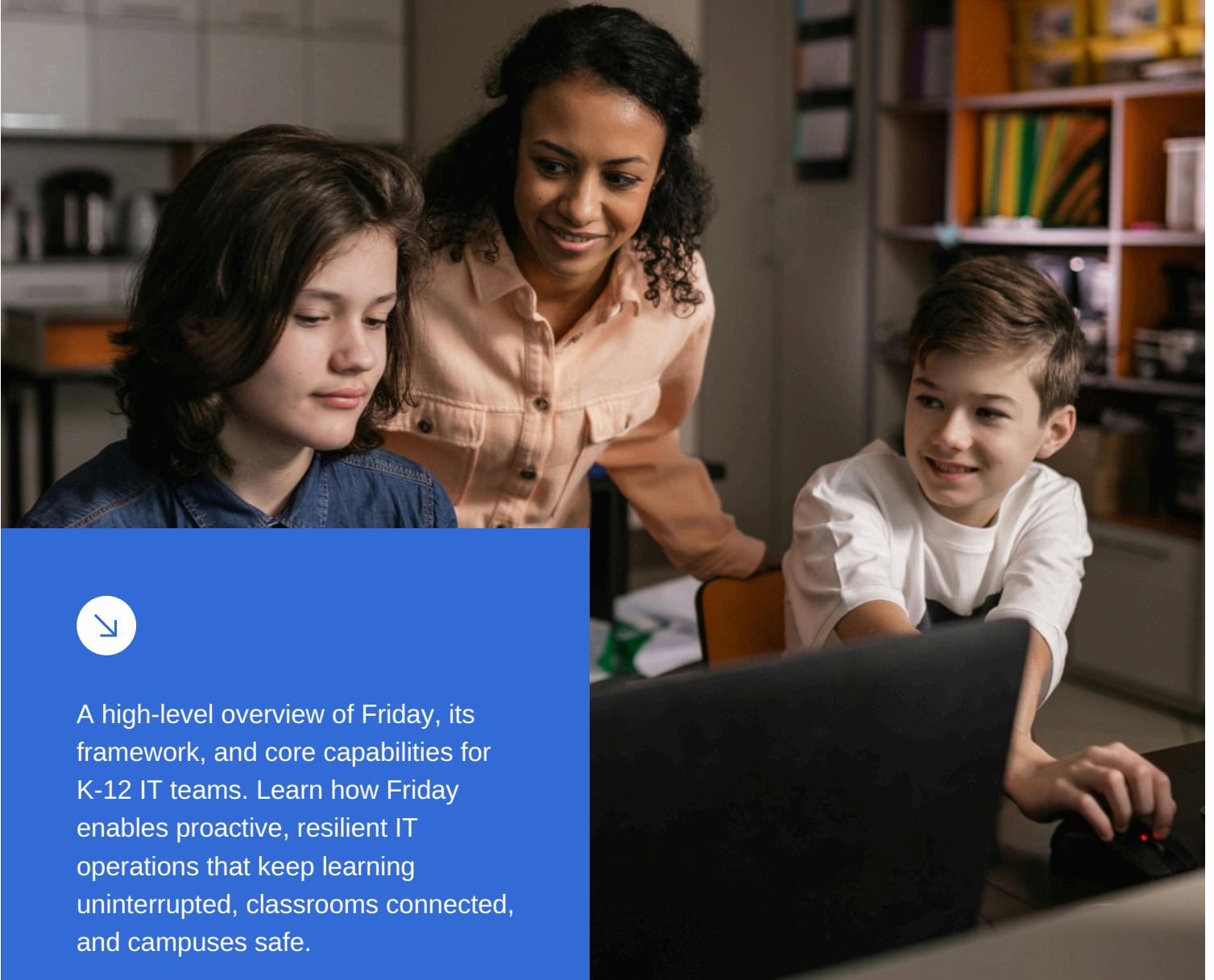




Friday AI™ Product Overview



A high-level overview of Friday, its framework, and core capabilities for K-12 IT teams. Learn how Friday enables proactive, resilient IT operations that keep learning uninterrupted, classrooms connected, and campuses safe.

Welcome to Friday



Friday is an **AI-powered IT operations platform** designed to help K-12 IT teams proactively manage device, network, cloud applications, and campus infrastructure—reducing downtime and controlling operational costs across schools.

Friday streamlines your district's IT operations by continuously **learning** the environment, **identifying** potential sources of issues, and **resolving Tier 1 problems** in real time through **user-defined automations**. This gives K-12 IT teams greater control and visibility across devices, networks, and campuses—helping them get ahead of issues before they impact classrooms.



Fewer classroom disruptions caused by technology issues.

Faster response to IT issues without increasing staff workload.



Reduced need for on-site technician visits across campuses.

More predictable, reliable technology across campuses.



Friday Framework

Friday augments your help desk by **automatically discovering every device on the network, continuously monitoring health, diagnosing root causes, and taking intelligent remediation steps.**



Discover

Friday rapidly learns your full IT footprint, discovering **devices, networks, endpoints, and infrastructure** across campuses and establishing a **normal operating baseline** without **manual setup**.



Monitor

Friday continuously monitors the **health and performance of your IT environment**, detecting anomalies, degradation, and emerging issues in real time



Triage

Friday triages issues based on **impact to classrooms and district operations**, helping IT teams prioritize critical problems and avoid unnecessary escalations.

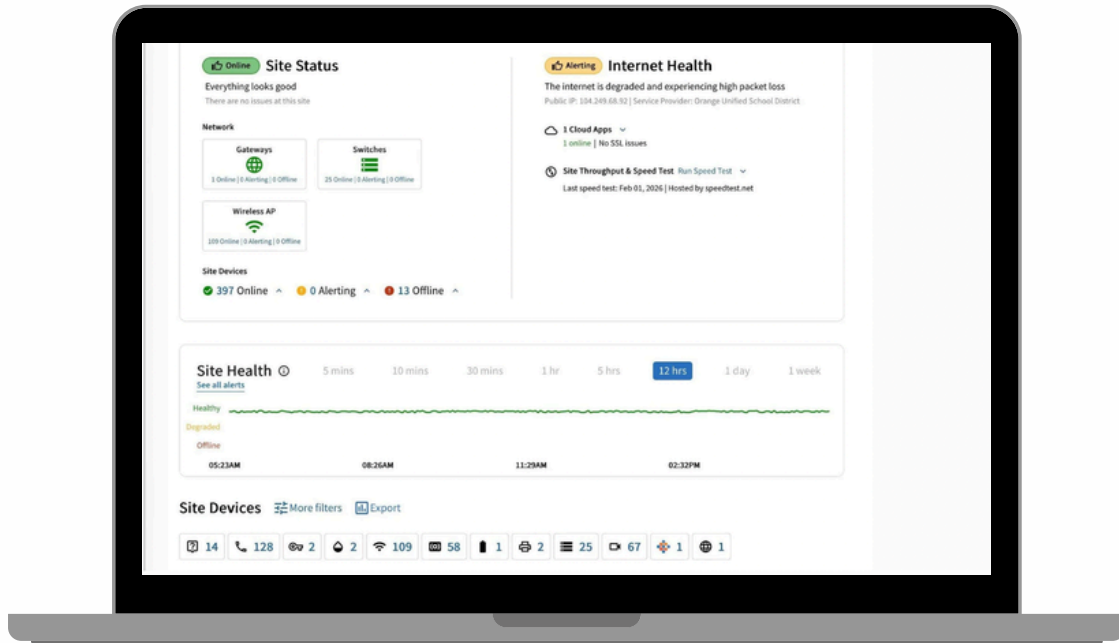


Resolve

Friday takes the next actionable steps to **automatically resolve routine Tier 1 issues through user-defined automations**, reducing downtime and minimizing the need for on-site technician visits.

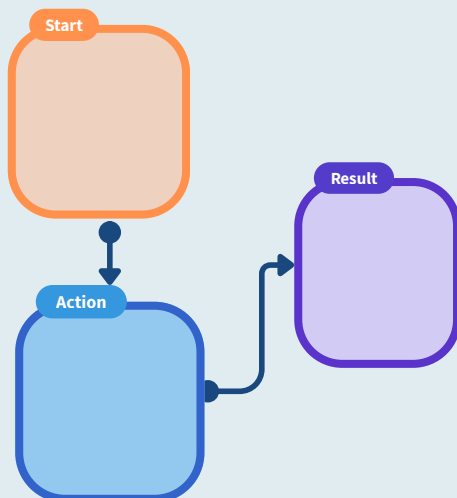
Friday Dashboard

ONE CENTRALIZED COMMAND CENTER FOR K-12 IT OPERATIONS



Friday's cloud-native dashboard gives districts a **single, centralized view** of health and performance across **multiple sites**, enabling teams to **automate Tier 1 support and control incident response**—without writing code.

Incident Response Flows- User Defined Automations



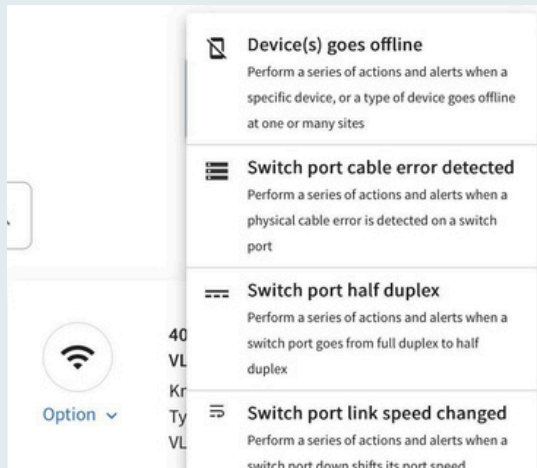
IR flows allow IT teams to **define how Friday detects, triages, and resolves routine issues automatically**. By turning repeatable processes into automated workflows, districts can reduce response time, minimize downtime, and escalate only when necessary.

Automated remediation actions include:

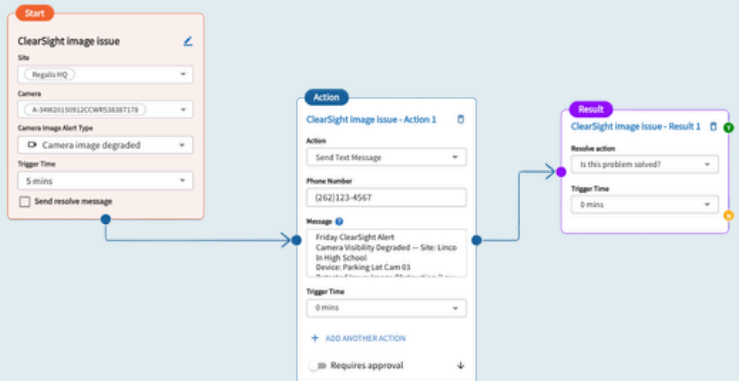
- Restarting services
- Resetting or reconfiguring switch ports
- Isolating failing or unstable hardware
- Rerouting traffic
- Applying policy-based configuration changes

Friday Dashboard

Incident Response Flow Library



Sample Incident Response Flow

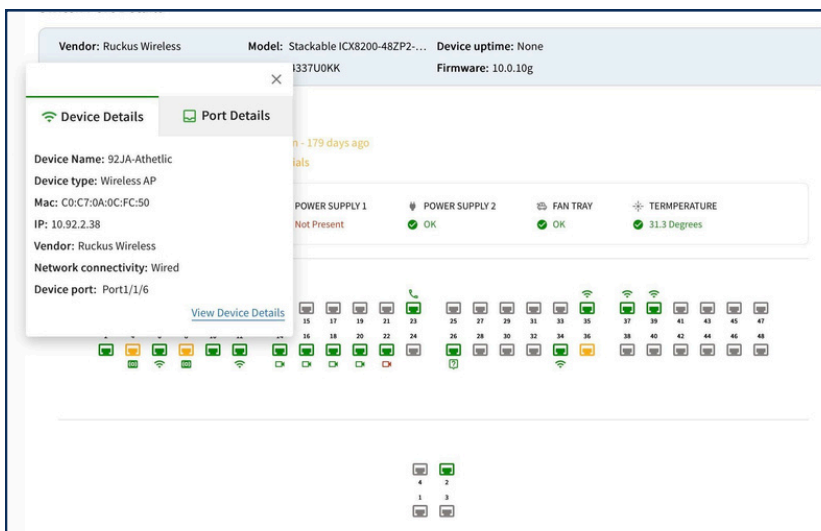


Teach Friday which anomalies to look for:

- Device goes offline
- Switch fan failure
- Switch port cable error
- Switch poe capacity reach
- Switch port half duplex
- New device discovered
- Switch port link speed changed

Easily set up remediating automations by choosing triggers, actions, timing, and needed approvals.

Switch Port Details



View full switch and port details—including vendor, model, firmware, power, temperature, and connected devices—from a single interface.

Friday ClearSight



Friday ClearSight goes beyond basic camera uptime by continuously assessing image quality in real time. By detecting obstructions, distortions, and visibility issues, ClearSight provides full context or automatically triggers incident response flows to restore visibility quickly and **support staff and student safety**.

The screenshot displays the 'Device Details' page for a camera. It includes sections for 'Device Details' (Status: Online, Last seen: Feb 2, 2026 05:21 PM), 'Connection Details' (Network: Ethernet, IP: 10.92.5.139), and 'Device Alerts'. The alerts section shows a list of 'Camera Image Degraded' events, each with a 'Resolved' button and a timestamp. A 'Friday Security Insights' table is also visible, showing open ports for ftp, http, and rtsp. At the bottom, there is a 'Friday ClearSight' section with a 'Visible' toggle and a note about image survey data.

ClearSight captures **periodic thumbnail images** and uses artificial intelligence to scan for:

- **Blurry or out-of-focus images**
- **Physical obstructions** (covered, blocked, or tampered lenses)
- **Camera misalignment** or shifted field of view
- **Glare, overexposure, or poor lighting**
- **Fog, condensation, or environmental interference**

Ideal for environments where **constant human monitoring is not permitted or practical**, ClearSight ensures you have usable footage when it matters most.



Ease of deployment

Deploy Friday quickly across campuses—without rip-and-replace, vendor lock-in, or complex setup.

01

Plug-and Go Deployment

Friday is designed for **fast, low-friction deployment** across single or multi-site environments. Simply **connect the Friday appliance** into the site's core switch and it automatically begins **discovering and profiling devices, learning their normal behavior**, and enabling **faster, automated resolution** of common issues.

www.fridayai.io

02

Vendor-Agnostic by Design

Friday is **vendor agnostic by design**, integrating seamlessly with your **existing IT stack**. Whether your environment includes **Cisco, Aruba, HP, Fortinet**, or other vendors, Friday **communicates locally** via command line and web APIs. **No infrastructure changes required.**